

Applications

- Development of image-based intuitive graphical user applications
- High performance controller software with remote access
- Real-time data and video acquisition applications

Methods

- Object oriented analysis and design with the UML
- Implementation and test within modern integrated development environments
- Revision, configuration and problem tracking management

Targets

- C/C++ for Linux and Microsoft Windows™
- C for INMOS transputers
- Abel for CPLD-modules
- Assembler for Siemens micro controllers
- Utilising several a/d-converters and timer modules
- Connections with sockets and serial/parallel interfaces
- Usage of platform independent libraries like STL, QT, X11/Motif, svgalib etc.

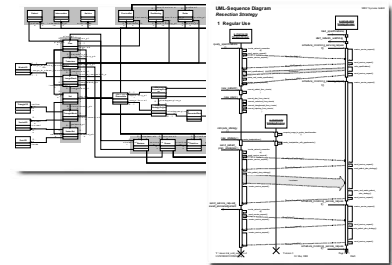


MRC's experts develop reliable software systems for the clinical environment

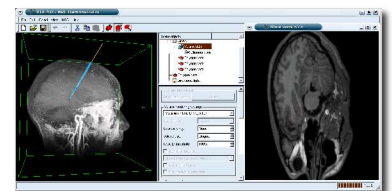
MRC Systems GmbH

Hans-Bunte-Str. 10
69123 Heidelberg
Germany

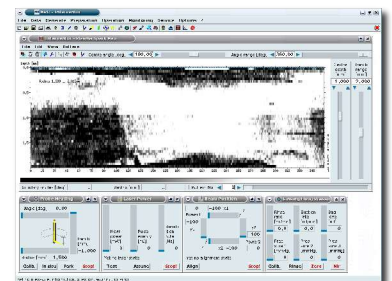
Phone +49-6221-13803-00
Fax +49-6221-13803-01
info@mrc-systems.de
www.mrc-systems.de



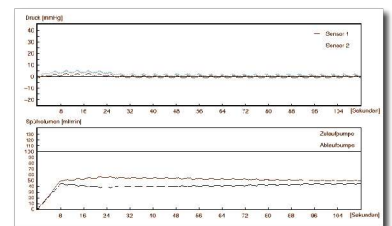
MRC performs professional software design



We use sophisticated 2D/3D image rendering libraries



We have designed an operator control panel for an interventional laser system



As well as a system for pressure-controlled intracranial rinsing